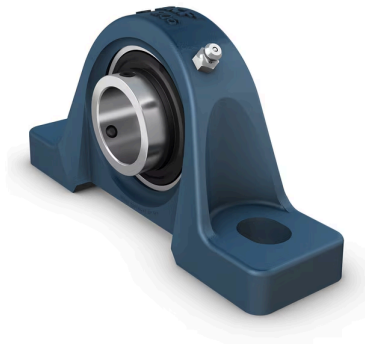


UCP 204/H

Ball bearing units

Pillow (plummer) block ball bearing units consist of an insert bearing mounted in a cast iron housing that can be bolted to a support surface. This variant is strong and stiff, and is suitable for applications with both constant and alternating directions of rotation. It has an inner ring extended on both sides and is locked onto the shaft by tightening a set screw on the inner ring, making it easy to mount.



- Strong
- Designed for a constant and alternating rotation
- Ready to mount
- Lubricated and sealed bearing
- Quick locking onto the shaft
- Cost-effective

Product information

Dimensions

Attachment bolt diameter	10 mm
Shaft diameter	20 mm
Centre height (pillow block)	33.3 mm
Housing overall width	34 mm
Centre distance between bolt holes	95 mm
Bearing width, total	31 mm

Performance

Basic dynamic load rating	12.7 kN
Basic static load rating	6.55 kN
Limiting speed	6500 r/min
Note	Limiting speed with shaft tolerance h6

Properties

Housing type	Pillow block, normal base
Number of bolt holes for fasteners	2
Fastening bolt hole type	Plain
Retaining feature, inner ring	Set screws
Bore type	Cylindrical
Rubber seating ring	Without
Material, housing	Cast iron
Material, bearing	Bearing steel
Coating	Without
Sealing, bearing	Seal and flinger on both sides
Sealing type	Contact, standard
Sealing, unit	Without
Lubricant	Grease
Relubrication hole	With
Grease fitting	With

Logistics

EAN code	07316579751810
Pack code	12
Products per pack	1
Collecting pack quantity	1
Products per pallet	280
Pack gross weight	0.621 kg
Pack length	78 mm
Pack height	140 mm
Pack width	49 mm
Pack volume	0.54 dm ³
Product net weight	0.601 kg
