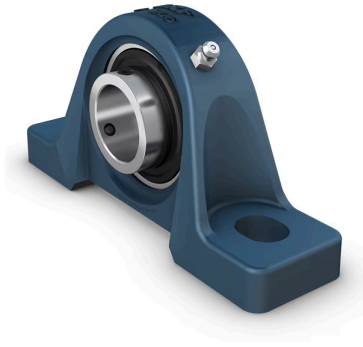


## UCP 206/H

### Ball bearing units

Pillow (plummer) block ball bearing units consist of an insert bearing mounted in a cast iron housing that can be bolted to a support surface. This variant is strong and stiff, and is suitable for applications with both constant and alternating directions of rotation. It has an inner ring extended on both sides and is locked onto the shaft by tightening a set screw on the inner ring, making it easy to mount.



- Strong
- Designed for a constant and alternating rotation
- Ready to mount
- Lubricated and sealed bearing
- Quick locking onto the shaft
- Cost-effective

# Product information

## Dimensions

Attachment bolt diameter	14 mm
Shaft diameter	30 mm
Centre height (pillow block)	42.9 mm
Housing overall width	45 mm
Centre distance between bolt holes	121 mm
Bearing width, total	38.1 mm

## Performance

Basic dynamic load rating	19.5 kN
Basic static load rating	11.2 kN
Limiting speed	5000 r/min
Note	Limiting speed with shaft tolerance h6

## Properties

Housing type	Pillow block, normal base
Number of bolt holes for fasteners	2
Fastening bolt hole type	Plain
Retaining feature, inner ring	Set screws
Bore type	Cylindrical
Rubber seating ring	Without
Material, housing	Cast iron
Material, bearing	Bearing steel
Coating	Without
Sealing, bearing	Seal and flinger on both sides
Sealing type	Contact, standard
Sealing, unit	Without
Lubricant	Grease
Relubrication hole	With
Grease fitting	With

## Logistics

---

EAN code	07316579751834
Pack code	12
Products per pack	1
Collecting pack quantity	1
Products per pallet	126
Pack gross weight	1.27 kg
Pack length	101 mm
Pack height	174 mm
Pack width	57 mm
Pack volume	1 dm <sup>3</sup>
Product net weight	1.24 kg

---